

THE HEATHERTON TROPHY RACE

SHELTER ISLAND YACHT CLUB

Sunday, July 1, 2018

SAILING INSTRUCTIONS



1 RULES

The regatta will be governed by the rules as defined in the Racing Rules of Sailing, (RRS) 2017-2020, the prescriptions of the US Sailing Association, except as changed by these sailing instructions and the ELIYA General Conditions.

2 NOTICES, COMPETITOR INFORMATION and SIGNALS MADE ASHORE

- 2.1 Any notices, amendments to the Sailing Instructions and all results will be posted on Yacht Scoring. The results will also be posted on the South deck of the event notice board.
- 2.2 Any amendments to the Sailing Instructions will be available before 0900 hours on the day of the race. Code flag "L" will be hoisted on the flagpole at the Shelter Island Yacht Club. Sailing instructions and any amendments will not be available from the Race Committee Signal Boat.
- 2.3 When "AP" is displayed ashore, "one minute" is replaced with "not less than one hour" in Race Signal AP.
- 2.4 The Race Committee will announce the location of the start and any other necessary information over VHF Channel 72 starting at 1100 hours.
- 2.5 Failure to hear or see any notices, signals made ashore, changes or amendments will not be cause for redress.

3 DIVISIONS and IDENTIFICATION

<u>DIVISION</u>	<u>FLAG</u>	<u>PHRF</u>
1	PENNANT 1	Spinnaker 105 and below
2	PENNANT 2	Spinnaker 106 and above
3	PENNANT 3	Non-spinnaker 160 and below
4	PENNANT 4	Non-spinnaker 161 and above

To facilitate identification by other entrants and the Race Committee, **entrants are required to display the flag for their division from the backstay or from another prominent location if no backstay is available. Yachts not flying a division flag will not be scored and will be disqualified without a hearing. This changes RRS 62.1 (a).**

4 SCHEDULE OF RACES

- 4.1 There will be a race for each of the four divisions in Gardiners Bay. The courses will use government marks and/or race markers as described in Appendix A.
- 4.2 The scheduled time for the warning signal for the first division to start a race will be 1300 hours.
- 4.3 The warning signal for subsequent divisions shall be made with or after the starting signal for the preceding division.
- 4.4 Each division may race individually or in combination with another division.
- 4.5 No warning signal shall be made after 1600 hours.

5 LOCATION OF THE START

- 5.1 Gardiners Bay in the vicinity of RW "N" Mo(A) WHIS. The location of the start will be broadcast by VHF Channel 72 starting at 1100 hours and posted on the SIYC website and the Yacht Scoring website.
- 5.2 If, after assembling at the announced location, conditions call for a different start location the Race Committee boat will display the code flag "F", announce the new starting area on VHF Channel 72 and proceed to the new starting area.

6 CHECK – IN AND RETIREMENT

- 6.1 Prior to the first warning signal, all yachts shall check in with the Race Committee Signal Boat by passing astern on starboard tack and announcing their sail number. The Race Committee will acknowledge by responding with the number heard.
- 6.2 A yacht that retires from the race shall notify the Race Committee on VHF Channel 72 as soon as possible.

7 COURSES MARKS

The courses marks are described in Appendix A.

8 THE START

- 8.1 Races will be started in accordance with Rule 26

<u>Signal</u>	<u>Flag and Sound</u>	<u>Minutes before start</u>
Warning	Division flag + 1 sound	5
Preparatory	P, I, Z, Z+I, U or Black flag + 1 sound	4
One Minute	Preparatory flag removed, 1 long sound	1
Starting	Division flag removed, 1 sound	0

- 8.2 The starting line will is described in Appendix A.
- 8.3 Yachts whose warning signal has not been made shall keep clear of the starting area.
- 8.4 A yacht starting later than 15 minutes after her starting signal will be scored DNS. This changes Rule A4.

9 INDIVIDUAL RECALLS

- 9.1 The Race Committee will endeavor to hail each premature starter over VHF Channel 72. However, failure to make such an announcement, nor the timing or order of such an announcement, shall not be grounds for redress. This changes Rule 62.1(a).
- 9.2 In the event of a general recall for any division, the start sequence will restart with the recalled division.

10 THE FINISH

The finish for the races is described in Appendix A.

11 GOVERNMENT BUOYS

Government buoys have no required side except when specified as marks of the course. Caution should be exercised for safe navigation.

12 PENALTY SYTEM

Rule 44.1 is changed so that a yacht has the choice between penalty systems, and the Two-Turns Penalty is replaced by the One-Turn Penalty. A yacht may choose to:

- a) take a One-Turn Penalty in accordance with Rule 44.2 or
- b) take a Scoring Penalty in accordance with Rule 44.3

13 TIME LIMITS

- 13.1 The time limit for each division will be four (4) hours after the start time for that division.
- 13.2 If the time limit for a division expires per RRS 35, the race will be abandoned for that division. Abandonment will be signaled by the Race Committee by displaying code flags "N" over "A" and the division flag for each abandoned division and an announcement over VHF Channel 72.

14 PROTESTS AND REQUEST FOR REDRESS

- 14.1 A yacht intending to protest is requested to report both their intention to protest and the yacht(s) being protested to the Race Committee over VHF Channel 72 at the finish of the race.
- 14.2 Protests or requests for redress shall be submitted as soon as practicable but not later than one (1) hour after the Race Committee Finish Boat has docked or ½ hour after the last yacht in each fleet has reached the mooring area by SIYC, whichever is later. The time limit for filing a protest will be posted on the SIYC Notice Board on the south deck of the SIYC clubhouse.
- 14.3 All protest hearings will take place at the SIYC as soon as possible after the notices are posted. The Protest Committee will attempt to hear protests in the order of receipt. Representatives of yachts who are parties to a hearing shall remain on call in the vicinity of the protest rooms (SIYC Sailing Center).
- 14.4 When a yacht has been involved in an incident that may be subject to a protest, it is her responsibility to check the protest notices at the end of the protest filing time to see if she is cited in a protest. Failure of any yacht to appear when called for a hearing will be considered by the Protest Committee as grounds for proceeding under Rule 63.3(b).

HEATHERTON TROPHY RACE SAILING INSTRUCTIONS

Appendix A

A1 COURSES for the Heatherton Trophy Race

A1.1 START

Between an Orange flag on the Race Committee Boat and the starting mark.

A1.2 COURSE DESCRIPTIONS

The courses for each division will be configured by the Race Committee Signal Boat when it is on station at the starting location. These courses will be communicated from the Race Committee by white board on the stern of the Race Committee Signal boat and by transmission on VHF Channel 72. Each course will be defined by the order marks are to be passed and the side on which each mark is to be left. It is anticipated that each course will be designed with the goal of having many points of sail. The marks and roundings to be used are described in **A2**.

A1.3 SHORTEN COURSE

The courses may be shortened at any course mark listed in A2 in accordance with Rule 32.

A1.4 WINDWARD MARK

A1.4.1 In order to achieve a proper start, the Race Committee may elect to set a weather mark at a distance from the starting line. The bearing and distance to this weather mark will be displayed on the Race Committee Signal boat with a white board. A flag "W" (weather mark) will be displayed over a red flag (leave to port) or a green flag (leave to starboard) at least five minutes prior to the first warning signal.

A1.4.2 The Race Committee may elect to set a long windward mark and a short windward mark. The distance displayed will be to the SHORT windward mark. The LONG windward mark will be on the same bearing at a distance of 0.5 NM beyond the short windward mark.

A1.4.3 If the flag "L" is displayed with the warning signal for a division, that division will use the LONG windward mark.

A1.4.4 If the flag "L" is **not** displayed at the warning signal for a division, that division will use the SHORT windward mark.

A1.4.5 The windward mark for a division may be used as a subsequent course mark for that division and will be designated as W with a P or S in the posted mark sequence for the course. The side on which W is to be left as a subsequent course mark might be different from the first rounding.

A1.5 FINISH

The finish will be between a Race Committee boat with an orange staff and the finish mark. The last entry in the posted course will indicate the vicinity of the finish. PC for Pipes Cove and YC for Shelter Island Yacht Club. The finish boat may be different from the start boat.

A2 MARKS and ROUNDINGS

A2.1 MARKS

A2.1.1 GOVERNMENT MARKS

- A RW "N" Mo(A) WHIS 1 ½ miles NE Ram Island
- B N "14" Crow Shoal
- C RW "TM" Mo(A) Bell N of entrance to Three Mile Harbor
- D C "1" ENE of Cedar Point
- E Red FLR Bell "2" Entrance to Greenport Channel
- F C "3" Entrance to Greenport Channel off Cornelius Point
- G N "6" Orient Harbor
- H G "7" FI G off Hay Beach
- J R "10" Fanning Point
- K G"1G" Bell N of Gardiners Point Ruins

A2.1.2 DROP MARKS

Drop Marks will be inflatable marks positioned relative to RW "N" Mo(A) WHIS.

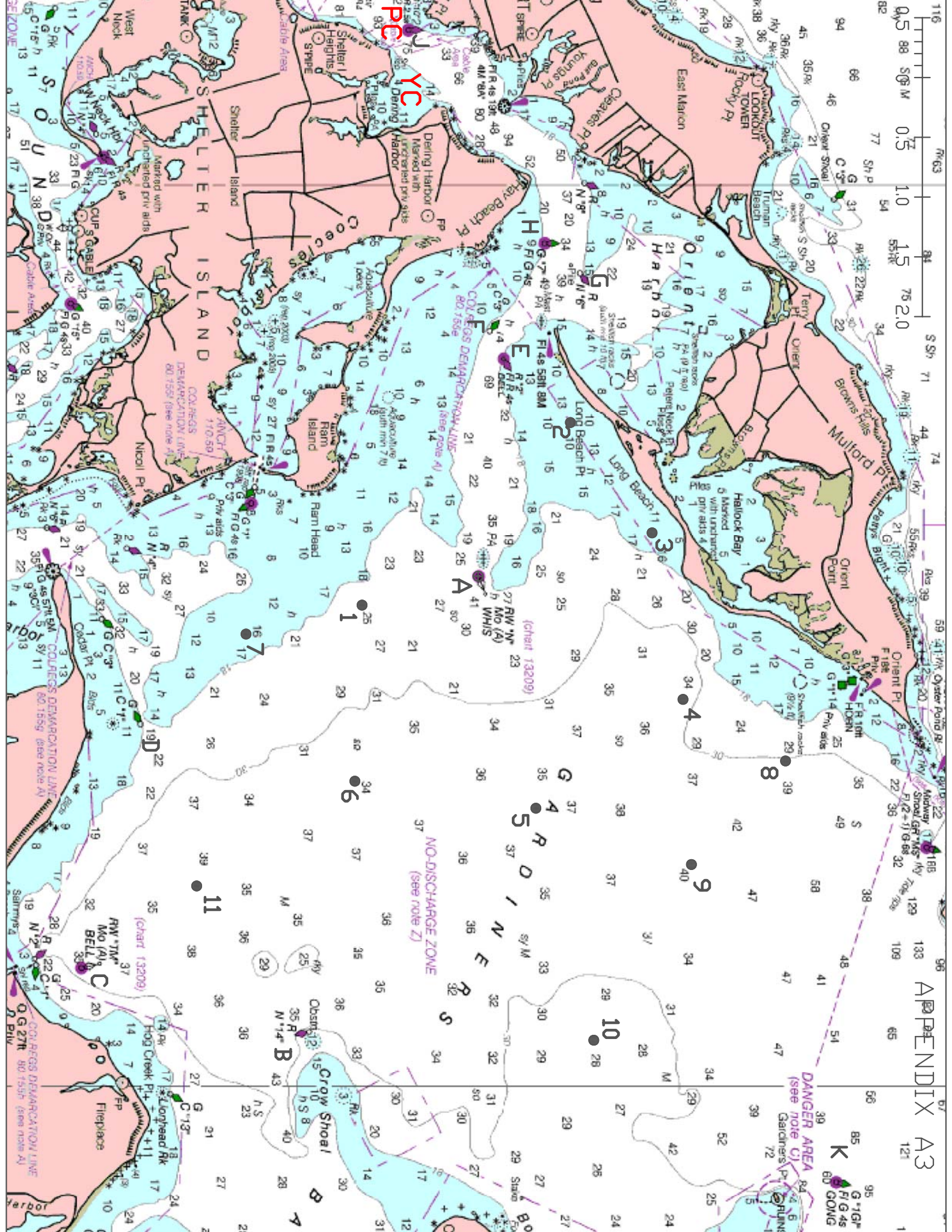
1. Race Marker 1 mile S (180 deg)
2. Race Marker 1.5 miles NW (315 deg)
3. Race Marker 1.5 miles N (000 deg)
4. Race Marker 2 miles NE (045 deg)
5. Race Marker 2 miles E (090 deg)
6. Race Marker 2 miles SE (135 deg)
7. Race Marker 2 miles S (180 deg)
8. Race Marker 3 miles NE (045 deg)
9. Race Marker 3 miles ENE (067.5 deg)
10. Race Marker 4 miles E (090 deg)
11. Race Marker 3.5 miles SE by S (146 deg)

ALL BEARING DIRECTIONS ARE MAGNETIC.

A2.2 ROUNDINGS

Letter "S" indicates mark to be left to STARBOARD

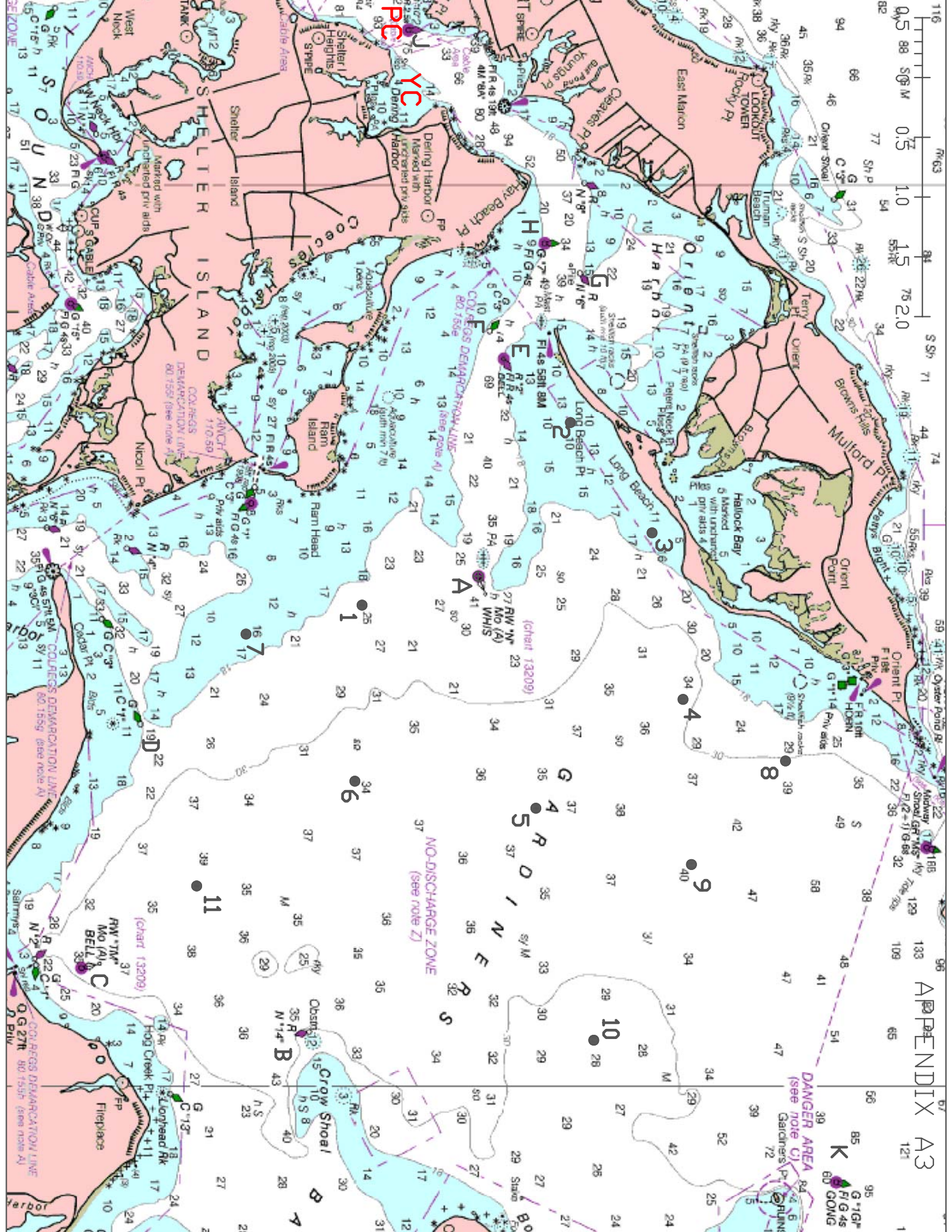
Letter "P" indicates mark to be left to PORT



APPENDIX A3

DANGER AREA (see note C)
Gardner's Pt. Shoal

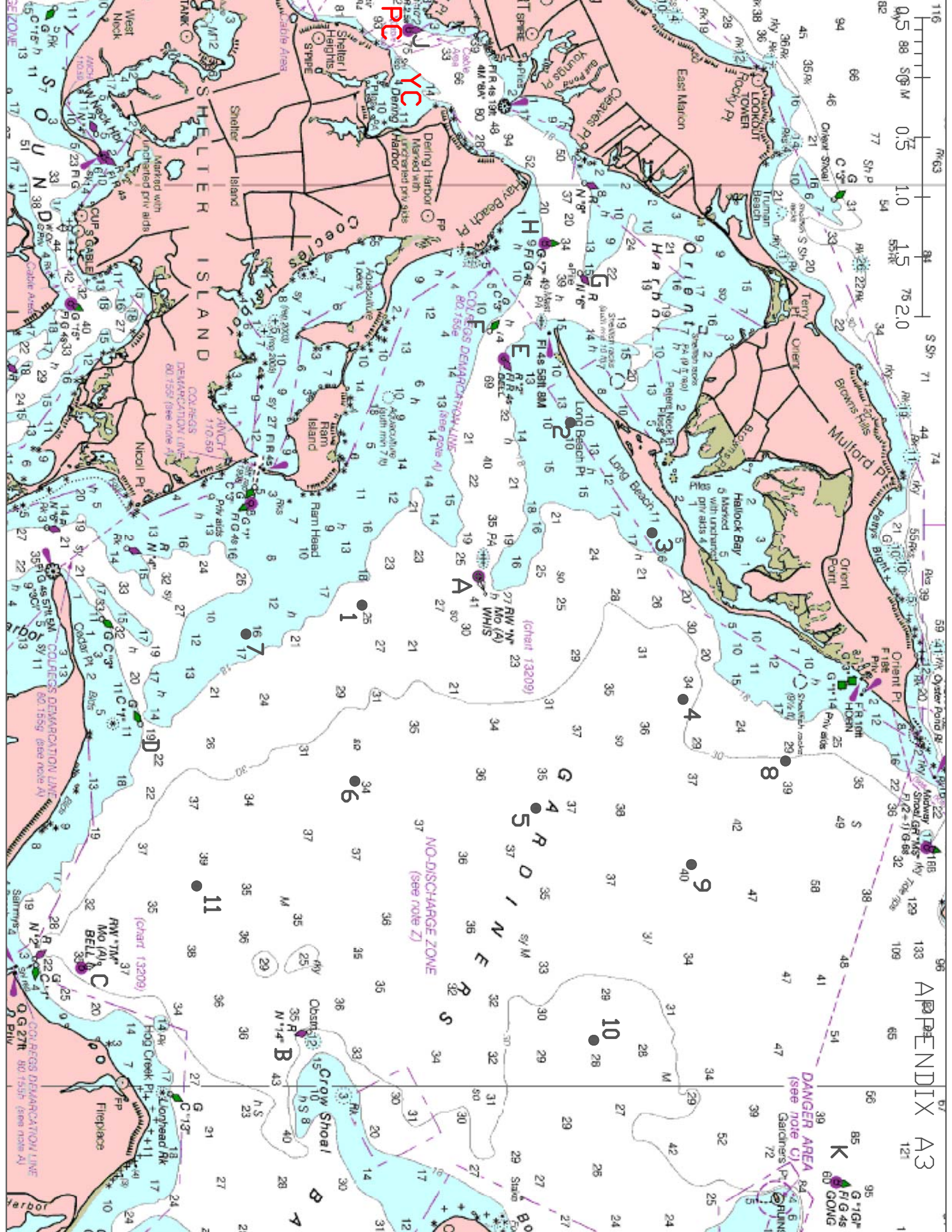
NO-DISCHARGE ZONE
(see note Z)



APPENDIX A3

DANGER AREA (see note C)
Gardner's Pt. Shoal

NO-DISCHARGE ZONE
(see note Z)



APPENDIX A3

DANGER AREA (see note C)
Gardner's Pt. Shoal

NO-DISCHARGE ZONE
(see note Z)